

uvex suXXeed arc

Internal arc, heat, flameprotection + antistatic



Jacket	uvex suXXeed arc
model-no.:	7654
color:	graphit,
mainfabric:	50 % Cotton, 49 % Polyester, 1 % antistatic fibers, 345 gsm
lining:	88 % Cotton, 12 % Polyamid 200 gsm
Size:	S-6XL
article-no.:	88492 graphit
Sales unit:	1 pcs.

PPE-category III

EN ISO 11611:2015



class 1 - A1

EN ISO 11612:2015



A1,B1,C1,F1

EN 1149-5:2018



IEC 61482-2:2018



APC=1 / APC=2
front and sleeves



INDUSTRIALWASH ●●

product description:

Multifunctional waist jacket in an ergonomic fit that meets a wide variety of challenges (for example, handling with hazards of arc).

- regular fit
- with attached reflex elements
- Front center zipper with panel
- 2 side pockets with concealed zippers
- 1 breast pocket with concealed velcro closure
- Stretch inserts in the back
- extended back part

Note: This protective clothing must always be worn as a suit in combination with a jacket with dungarees / trousers and closed!

Successful test with increased arc energies of 558.7 - 564.8 kJ for jacket with shirt model 7937 in accordance with IEC 61482-1-2 at 11.7 kA / 0.5 s (tested at Eurotest)

However only in the area of the upper front body, sleeves and shoulders.

IEC 61482-1-1 ATPV

in two-layer areas of the jacket (front and sleeves) = 46 cal/cm²

in two-layer areas of the jacket (front and sleeves) in combination with Polo Shirt 7937 = 62 cal/cm²

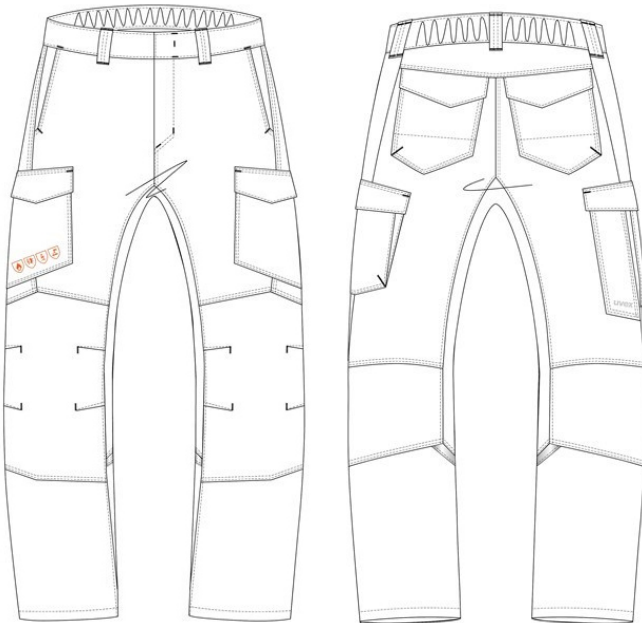
in two-layer areas of the jacket (front and sleeves) in combination with Shirt 7421 = 57 cal/cm²

The declaration of conformity for this product can be viewed at: uvex-safety.com/ce

Pay attention to the user information!

uvex suXeed arc

Internal arc, heat, flameprotection + antistatic



trousers	uvex suXeed arc
model-no.:	7655
colour:	graphit
Main fabric:	50 % Cotton, 49 % Polyester, 1 % antistatic fibers, 345 gsm
lining:	88 % Cotton, 12 % Polyamid, 200 gsm
sizes:	23-32, 42-66, 90-110
article-no.:	88493 graphit
Sales unit:	1 pcs.

PPE-category III

EN ISO 11611:2015



class 1 - A1

EN ISO 11612:2015



A1,B1,C1,F1

EN 1149-5:2018



IEC 61482-2:2018



APC=1 / APC=2
front



product description:

Multifunctional trousers in ergonomic fit that meet a wide variety of challenges for example, handling with hazards of arc).

- concealed button, attached reflex elements
- front fly with zipper
- 2 side pockets with slant intervention and consealed zippers
- 2 leg pockets:

left: leg pocket with inner cell phone pocket, folding at the back

right: leg pocket, additional rule pocket, flaps with concealed velcro fastener

- 2 back pockets with reinforcement and flaps with concealed velcro closure
- knee-forming, knee pockets inside

Notes: This protective clothing must always be worn as a suit in combination with a jacket with dungarees / trousers and closed! However, APC=2 only applies to the area of the front trousers.

IEC 61482-1-1 ATPV

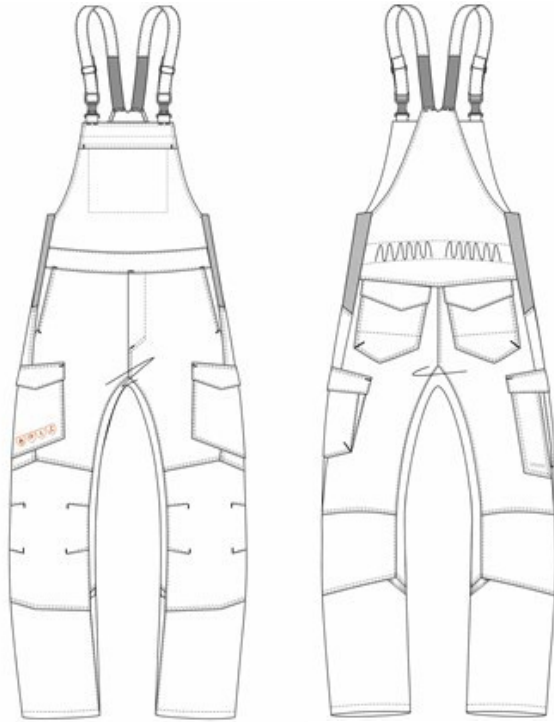
in two-layer areas of the jacket (front and sleeves) = 46 cal/cm²

The declaration of conformity for this product can be viewed at: uvex-safety.com/ce

Pay attention to the user information!

uvex suXXeed arc

Internal arc, heat, flameprotection + antistatic



dungarees uvex suXXeed arc

model-no.:	7656
colour:	graphit
Main fabric:	50 % Cotton, 49 % Polyester, 1 % anstistatic fibers, 345 gsm
lining:	88 % Cotton, 12 % Polyamid, 200 gsm
sizes:	23-32, 42-66, 90-110
article-no.:	88494 graphit
Sales unit:	1 pcs.

PPE-category III

EN ISO 11611:2015



class 1 - A1

EN ISO 11612:2015



A1,B1,C1,F1

EN 1149-5:2018



IEC 61482-2:2018



APC= 1 / APC=2
front



product description:

Multifunctional dungarees in ergonomic fit that meet a wide variety of challenges (for example, handling with hazards of arc)

- attached reflex elements
- front fly with zipper
- 2 side pockets with slant intervention and bib pocket with consealed zippers
- 2 leg pockets:

left: leg pocket with inner cell phone pocket, folding at the back

right: leg pocket, additional rule pocket, flap with concealed velcro fastener

- 2 back pockets with reinforcement and flaps with concealed velcro closure
- Knee-forming, knee pockets inside

Note: This protective clothing must always be worn as a suit in combination with a jacket with dungarees / trousers and closed! However, APC=2 only applies to the area of the front trousers.

IEC 61482-1-1 ATPV

in two-layer areas of the jacket (front and sleeves) = 46 cal/cm²

The declaration of conformity for this product can be viewed at: uvex-safety.com/ce

Pay attention to the user information!

uvex suXXeed arc

Internal arc, heat, flameprotection + antistatic



model: 7654

article-no. **88492** | **graphit**



model: 7937

article-no.:	17237	orange
	17238	grey
	17239	royal blue

Optimum compatibility within the product family

The uvex suXXeed arc family provides reliable protection against thermal hazards. In combination with the internal-arc-shirt our products reach even higher protection classes.



model-no.: 7654

article-no.: **88492** | **graphit**

+



model-no: 7397

article-no.:

17237	orange
17238	grey
17239	royal blue

=

Highest impact energy

Note:

This protective clothing must always be worn as a suit in combination with a jacket with dungaree/ trousers and closed! ! Jacket in combination with the flame protection shirt model 7937 results in arc protection with the highest impact energy. However, this only applies to the area of the front body, sleeves and shoulders!

Pay attention to the user information!

uvex suXXeed arc**Internal arc, heat, flameprotection + antistatic****model-no: 7655****article-no.: 88493** **graphit****model-no: 7656****article-no.: 88494** **graphit****Note:**

This protective clothing must always be worn as a suit in combination with a jacket with dungaree/ trousers and closed! ! Jacket in combination with the flame protection shirt model 7937 results in arc protection with the highest impact energy. However, this only applies to the area of the front body, sleeves and shoulders!

Pay attention to the user information!